



**Concierge  
booklet**

---

**HOTEL ESTÉ  
76 BOULEBARD DE STRASBOURG**

**WELCOME**

# Présentation **ABOUT US**

Welcome to our home!

We are delighted to welcome you to our 4-star hotel. This booklet has been designed to help you enjoy your stay with us. You will find all the necessary information about nearby activities



**CONTACT  
US**

Hotel Number : 01 89 89 76 76  
Email : [bonjour@hotelesteparis.com](mailto:bonjour@hotelesteparis.com)

# Things to do, things to see ...

# VISITS

## MUST-SEE MONUMENTS

Tour Eiffel (M 4) (RER C)

Cathédrale Notre-Dame (M 4)

Arc de Triomphe (M 4) (1)

Opéra Garnier (M 7)

La Basilique du Sacré Cœur (M 4)

## MUSEUMS

Musée du Louvre (M 7)

Musée d'Orsay (M 4) (RER C)

Musée Grévin (M 4) (9)

Centre Pompidou (M 4)

Les Invalides (M 4) (8)

## ACTIVITIES AND DISTRICTS TO VISIT

River Boat : Pont de l'Alma (M 7) (9)

Bus Hop-On Hop-Off : Opéra (M 7)

Montmartre (M 4)

Le Marais (M 4)

Le Moulin Rouge (M 4) (2)

Canal Saint Martin (M 5)

Jardin des Tuileries (M 4) (1)

## SHOPPING MALLS

Westfield - Les 4 Temps (M 4) (RER A)

Westfield - Forum Les Halles (M 4)

Les Galeries La Fayette (M 7)

Le Bon Marché (M 4)

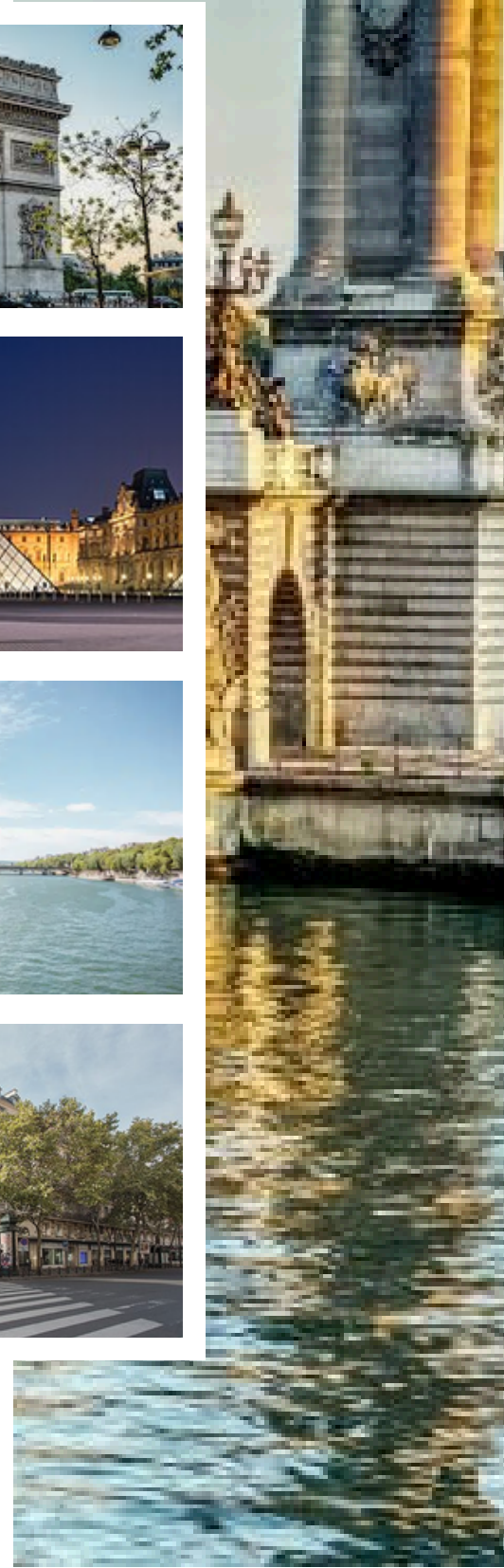
## LUXURY BOUTIQUES

Les Champs Elysées (M 4) (1)

Avenue Montaigne (M 7) (9)

Rue du Faubourg Saint-Honoré (M 7)

Place Vendôme (M 7)



# Close by RESTAURANTS

## GOURMET RESTAURANTS



### PASSIONÉ

DISTANCE : 17 MIN ON FOOT

Japanese chef Satoshi Horiuchi. Gourmet restaurant in Paris revisits with panache and modernity the French gastronomy while respecting small producers and seasons.



### QUELQUE PART...LES ABYSSES

DISTANCE : 14 MIN ON FOOT

Immerse yourself in a unique culinary experience at Quelque part les Abysses, where refined flavors and mysteries from the depths meet to awaken your senses in an enchanting setting.



### MÂCHE

DISTANCE : 08 MIN ON FOOT

A gourmet restaurant that combines a culinary mindset always precise and innovative, with the permanent search for excellence and extra-ordinary for our customers.



## BISTRO RESTAURANTS



### L'ARCHIMÈDE

DISTANCE : 13 MIN ON FOOT

L'Archimède is a bistronomic restaurant located near the Canal Saint-Martin in Paris. It offers modern and seasonal French cuisine, with a short and neat menu.



### LES RUPINS

DISTANCE : 07 MIN ON FOOT

The restaurant offers traditional French cuisine, with dishes such as salmon tartare, succulent steaks and vegetarian options.



### MARTIN PARIS

DISTANCE : 14 MIN ON FOOT

A chic bistro in Paris République, where chef Mélissa Ravel offers inventive and seasonal cuisine. Artistic and gourmet dishes promise a unique sensory experience.



# Close by RESTAURANTS

## RESTAURANTS - BRASSERIES



### LES PARIGOTS - RÉPUBLIQUE

DISTANCE : 12 MIN ON FOOT

Les Parigots offers traditional French cuisine, with homemade dishes made from seasonal products. The setting is warm and friendly, reflecting the spirit of the Parisian bistros of the time.



### LA PETITE LOUISE

DISTANCE : 07 MIN ON FOOT

Every day the Chef puts the dishes in the big ones to concoct a modern and tasty cuisine based on fresh products. Ideal for sharing a meal or cocktail with friends, family or colleagues.



### LE BOUILLON CHARTIER

DISTANCE : 02 MIN ON FOOT

Iconic Parisian restaurant offering traditional French cuisine. In a retro decor with red benches and old posters, you can taste classic dishes.



## CAFÉ & BARS



### LE SAINT DENIS

DISTANCE : 10 MIN ON FOOT

Superb neighborhood bar, authentic with a very friendly atmosphere, a clientele who does not take the head. we feel gum at either.



### CAFÉ DELAVILLE

DISTANCE : 15 MIN ON FOOT

The Delaville is a place of festivities open every day. On the menu we focus on seasonal, organic, local products in the kitchen and at the bar.



### L'OURS BAR

DISTANCE : 05 MIN ON FOOT

The cocktail menu has been created by our team of mixologists to surprise and satisfy all palates. Creative and attentive bartenders behind the counter will satisfy your curiosity.



# Close by RESTAURANTS

## ASIAN RESTAURANTS



### CHEZ ANN PARADIS

DISTANCE : 05 MIN ON FOOT

In Asia, the best food is often sold on the sidewalk. People gather to enjoy simple, fresh food prepared daily. This is our idea: simple, light and very tasty dishes.



### GROS BAO

DISTANCE : 12 MIN ON FOOT

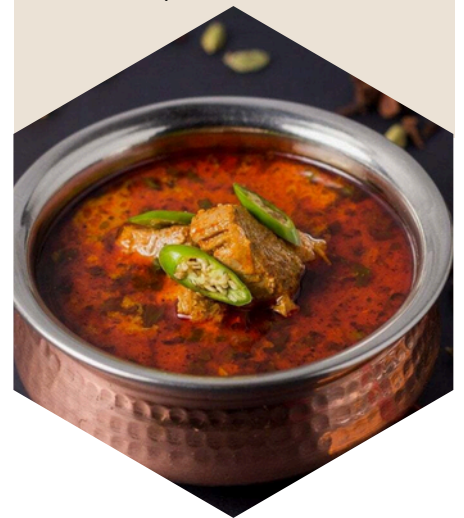
Gros Bao is a large restaurant along the Canal Saint-Martin. You can taste the classics like bao and wok dishes, but also rotisserie which is the specialty of this place.



### OLD SHALIMAR

DISTANCE : 09 MIN ON FOOT

Old Shalimar welcomes you and offers you a traditional Indian cuisine. Come and discover our delicious preparations made with fresh products such as our chicken Korma or our shrimp Masala.



## ITALIAN RESTAURANTS



### BACI BACI

DISTANCE : 12 MIN ON FOOT

Cool and relaxed Italian restaurant at the foot of the renaissance theater with a very large terrace. Home cooking, caffè à l'italiana, Happy Aperitivo 7/7, Amazing cocktails!



### LA CASPITA

DISTANCE : 10 MIN ON FOOT

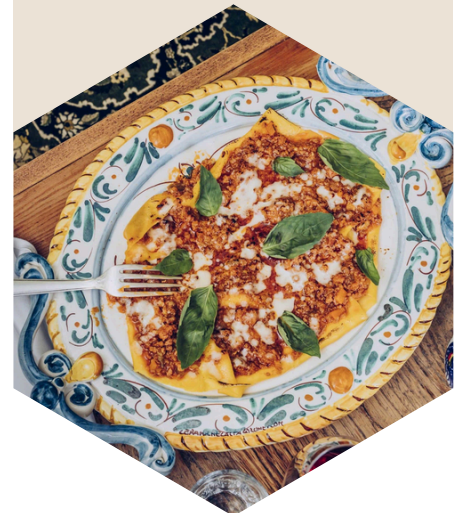
The menu offers a wide variety of homemade Italian specialties, transforming your meal into a real journey, from appetizers to coffee, desserts and other delicacies.



### LIBERTINO

DISTANCE : 14 MIN ON FOOT

Antipasti, burrata in abundance, truffle pasta and pizza margherita according to the secret recipe of the chef's grandmother... Libertino honors the good Italian dishes and invites you in a setting as mysterious as funky.



*See you soon*

**THANK YOU!**

We wish you a great stay at the ESTE Hotel.

Please do not hesitate to contact us for further information.

The TEAM of Hotel ESTE

